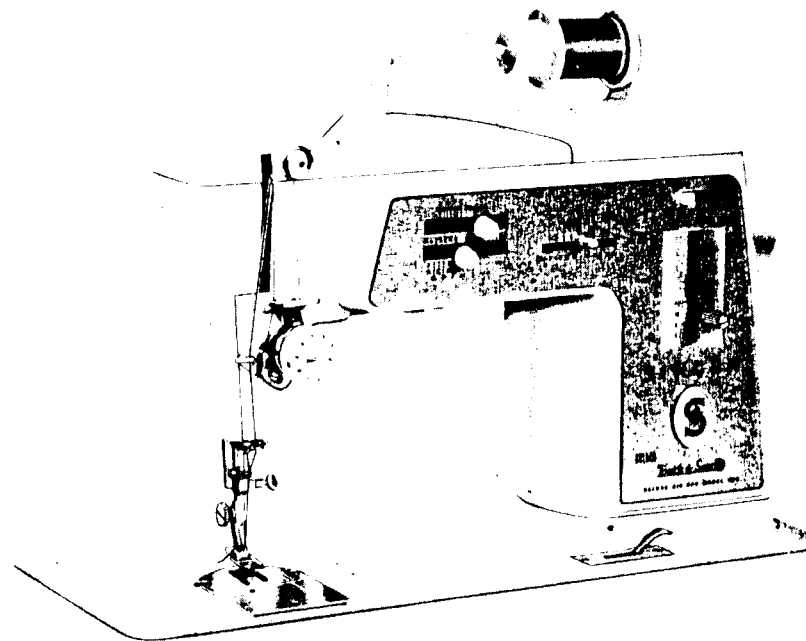


SINGER
620E1,620E31

Machine No. 620E

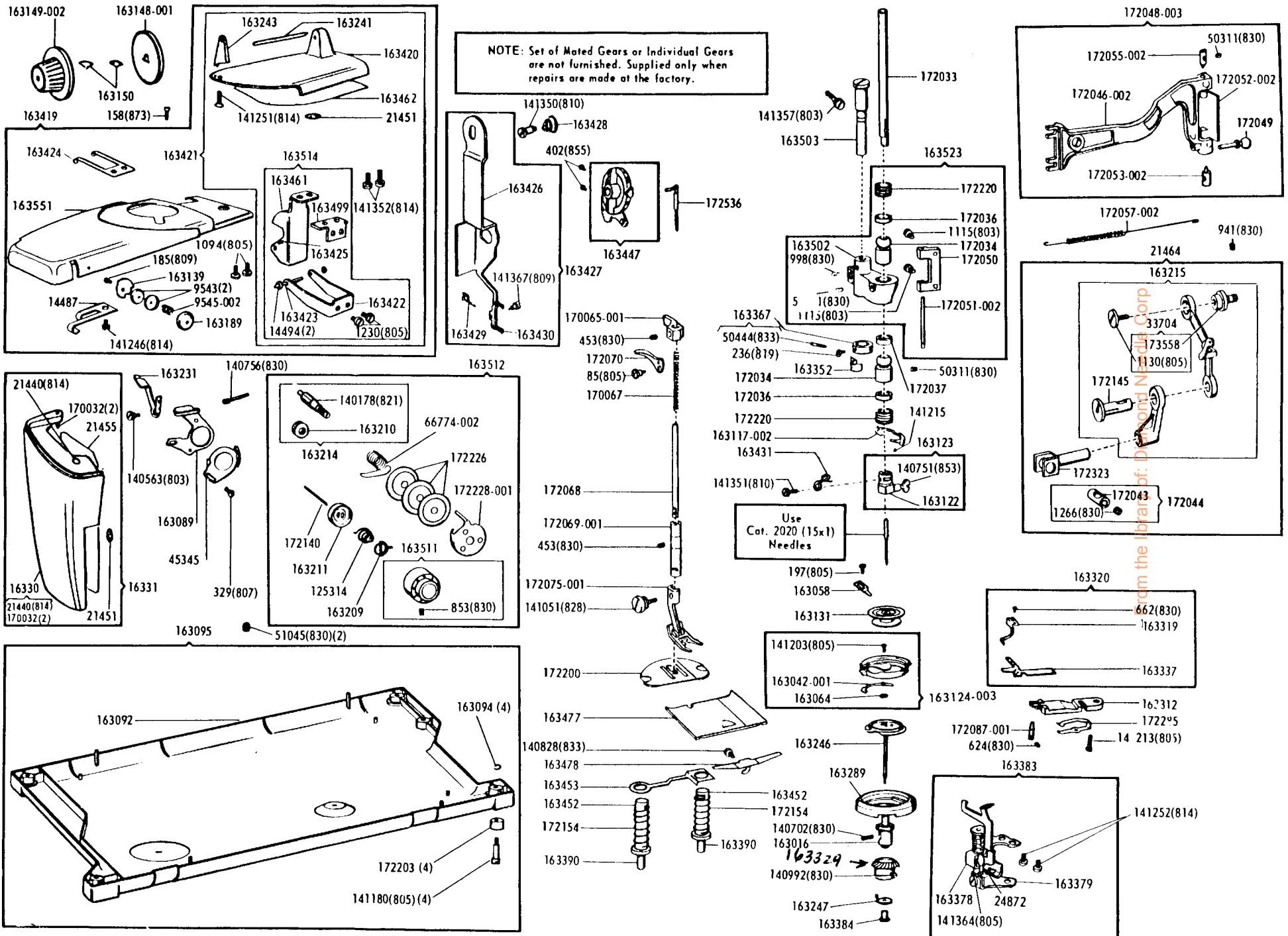
List of Parts—Machine No. 620E1 and 620E31



ATTACHMENT SET 161948

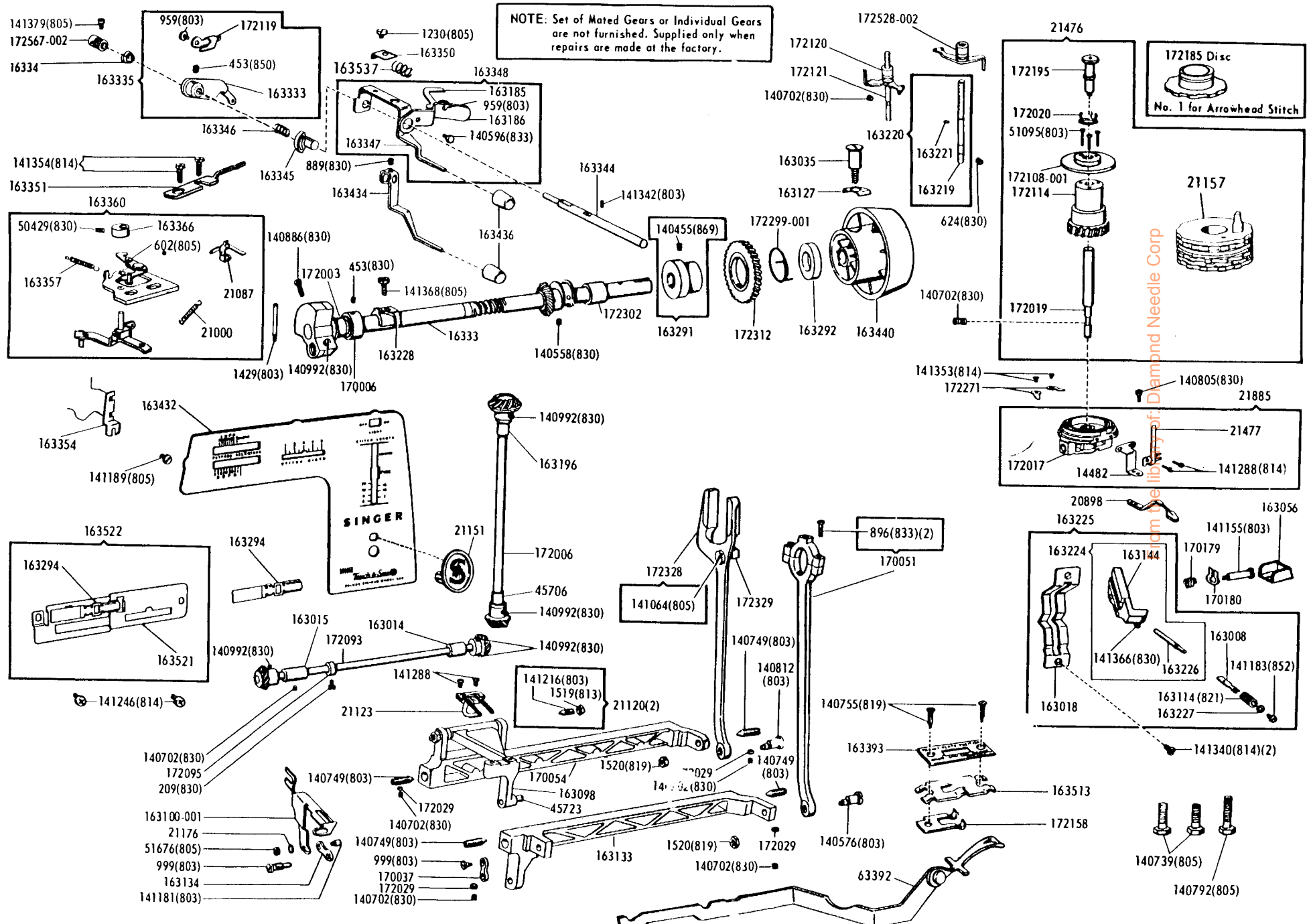
21906	Loop Retainer Disc
21913	Throat Plate
81200	Binder
161133	Tube of Oil
161166	Zipper Foot
161168	Button Foot
161172	Seam Guide
161195	Hemmer Foot
161276	Lint Brush
161849	Attachment Box
163131	Bobbin (6)
163242	Spool Pin
163369	Fashion Disc 2
163374	Overedging Foot
163483	Special Purpose Foot
163455	Thread Guide
170071-001	Presser Foot
172187	Fashion Disc 2
172190	Fashion Disc 4
172191	Fashion Disc 5
174529	Throat Plate
2020(15x1)	Needles 14 (3) 16 (3)
21621	Instruction Book

List of Parts—Machine No. 620E1 and 620E31



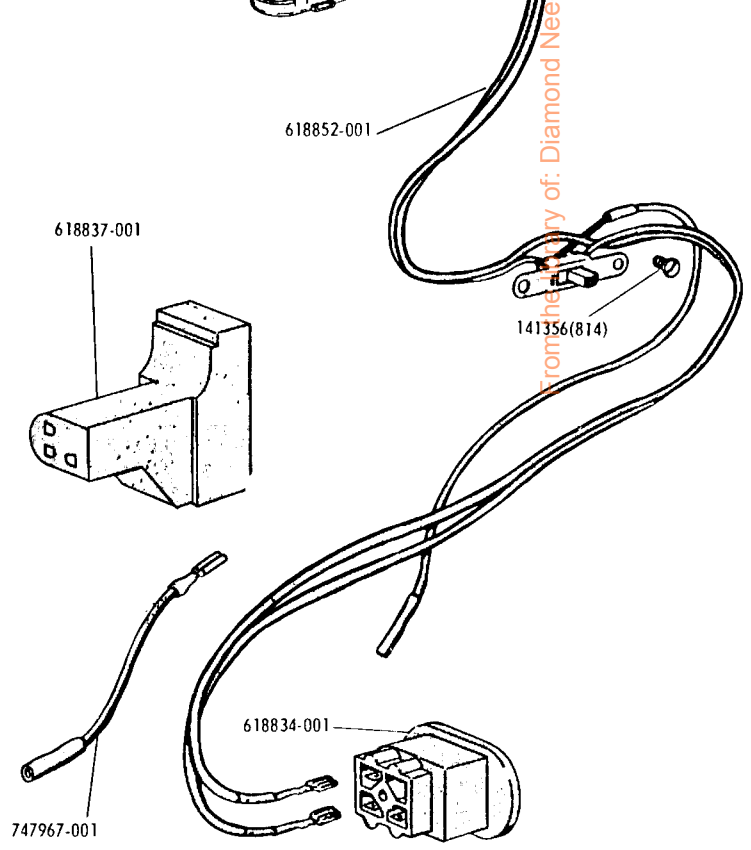
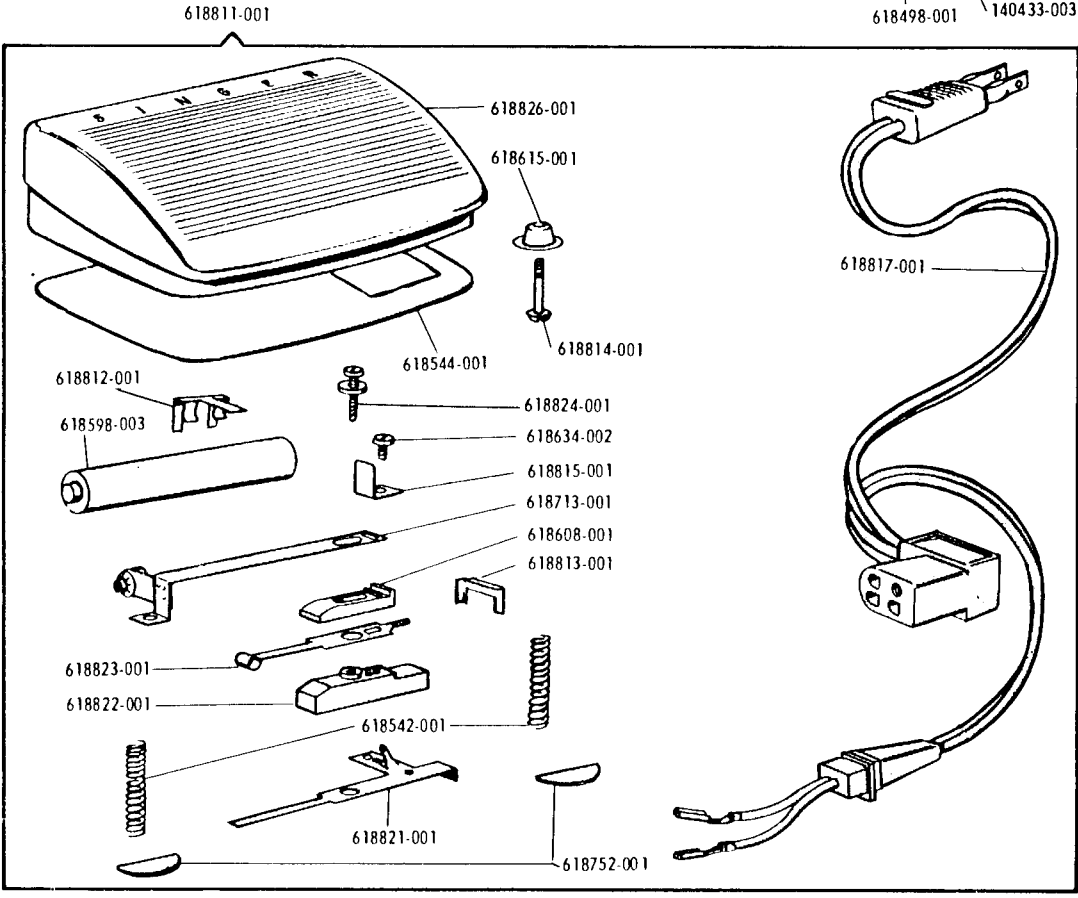
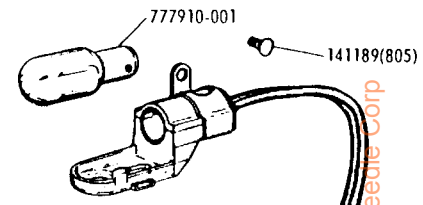
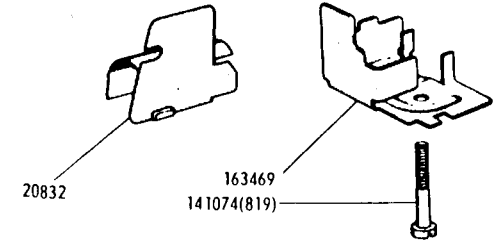
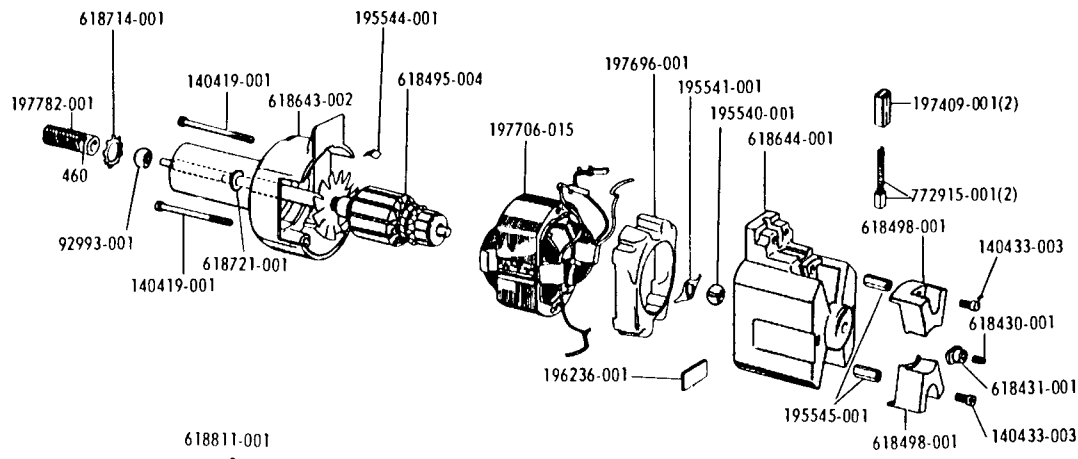
List of Parts—Machine No. 620E1 and 620E31

NOTE: Set of Mated Gears or Individual Gears are not furnished. Supplied only when repairs are made at the factory.



Copyright © 1973 by Singer Sewing Company

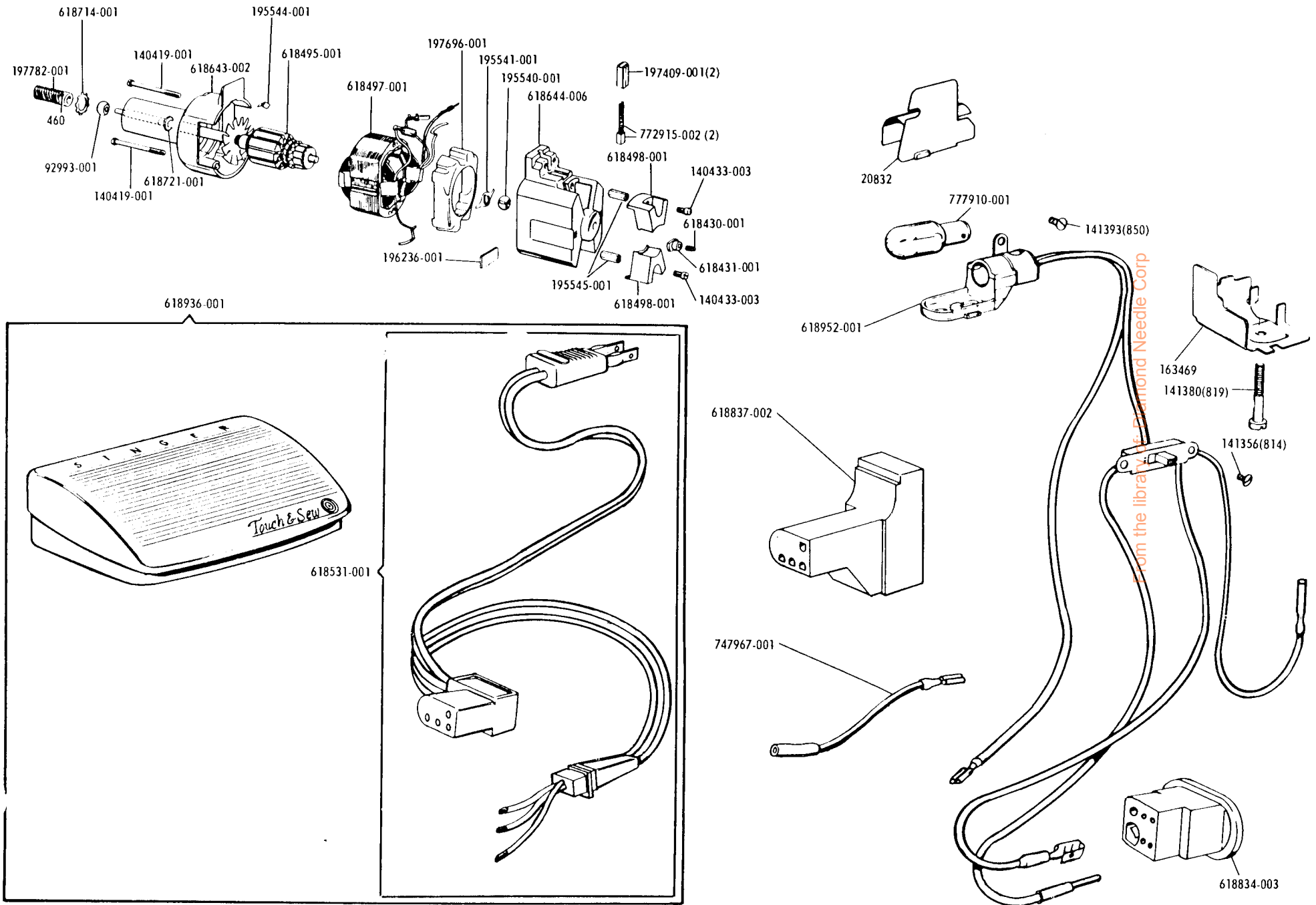
Electrical Parts—Machine No. 620E1



From the factory of: Diamond Needle Corp



Electrical Parts — Machine No. 620E31



From the library of Diamond Needle Corp

